

NEW



- ...❖ New motor with extended speed range



- ...❖ One machine to cut tubes and elbows

RA 41 Plus

Pipe Cutting and Beveling Machine

The solution for preparing thin-walled tubes, elbows and fittings!

Advantages:

- Saw blade mountable in front and rear
- Deformation-free clamping system
- Dimension related clamping shells made of aluminum for thin-walled tubes
- Clamping jaws made of aluminum

Your benefits:

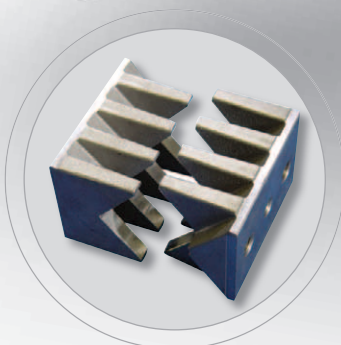
- **NEW:** Extended speed range (65 - 215 rpm), ideal for the cutting of high-performance materials (Hastelloy, P91, etc.)
- **NEW:** A new ergonomically-designed motor handle for a safer and more comfortable operating position
- One machine to cut tubes and elbows
- Effective and environmental friendly
- Optimal preparation for orbital welding
- Cutting of thin-walled tubes
- No contact corrosion while preparing stainless steel tubes
- Perfect for INOX applications



- ...❖ «Planetary Cutting Technology»



Aluminum clamping shells for deformation-free clamping of thin-walled tubes.



Aluminum clamping jaws for RA 4 and RA 41 Plus. Standard part of the RA 41 Plus. Code 790 046 250



High-performance lubricants for pipe cutting and beveling to increase the saw blade life-time. Synthetic saw blade lubricating compound **GF TOP**, Tube, 180 g: Code 790 060 228. Chlorine-free saw blade lubricating compound **GF LUB**, Tube, 160 ml: Code 790 041 016.



Quick-mounting base plate with integrated screw clamps for easy and fast mounting of the machine to the bench. Ideal for frequent location change. Code 790 042 027

Pipe Cutting and Beveling Machine

Working range	RA 41 Plus
Tube OD (tubes)	10 - 120 mm 0.394 - 4.724 inch
Tube OD (elbows)	30 - 120 mm 1.181 - 4.724 inch
Wall thickness max. (depends on material)	0.6 - 7 mm 0.024 - 0.276 inch
Tube ID min. (saw blade-Ø 38 mm/2.480 inch)	21 mm 0.827 inch
Tube ID min. (saw blade-Ø 68 mm/2.677 inch)	16 mm 0.630 inch
Tube ID min. (saw blade-Ø 80 mm/3.150 inch)	4 mm 0.157 inch

Tube materials:

Unalloyed and low-alloyed steel, high-alloyed steel (stainless steel, material no. 1.40...-1.45... in accordance with DIN 17455 and 17456), copper, brass, annealed cast-iron pipe (nodular graphite iron), aluminum. Consult Orbitalum Tools before using for other applications and/or materials.

Technical data	RA 41 Plus
Dimensions	700 x 490 x 460 mm 27.6 x 19.3 x 18.1 inch
Weight approx.	77 kg / 170 lbs
Power	1.8 kW / 2.4 hp
Protection class	Totally insulated (class II, DIN VDE 0740)
Speed	65 - 215 rpm
Versions	230 V, 50/60 Hz EU: Code 790 046 011 120 V, 50/60 Hz EU: Code 790 046 014 120 V, 50/60 Hz US: Code 790 046 012
Vibration level	< 2.5 m/s ² (EN 28662, part 1)
Sound pressure level at workplace approx.	at idle: 76 dB (A) under load: 85 dB (A)

Stamp of distributor:

*The technical data are not binding.
They are not warranted characteristics and are subject to change.
Please consult our general conditions of supply.*

© Orbitalum Tools GmbH (02.2010)

Sales Contact:

Tel. +49 (0) 77 31 792-786 up to -790
Fax +49 (0) 77 31 792-524
tools@orbitalum.com
www.orbitalum.com

Repair Service:

Josef-Schuettler-Str. 17
78224 Singen, Germany
Tel. +49 (0) 77 31 792-764
Fax +49 (0) 77 31 792-524