

# RPG ONE

## RPG 1.5

## RPG 2.5

**NEW!**  
Battery motors  
with powerful and  
environmentally  
friendly lithium ion  
technology!

**Tube Squaring Machines** – designed for burr-free squaring and beveling of thin-walled stainless steel tubes and micro fittings.

For the required, high quality tube end preparation for orbital welding!

### Advantages:

- Burr-free and square
- Beveling (30°/35°) possible with a special holder
- High-performance coated tool bit with two cutting edges
- Exact results due to micrometer/inch feed
- Speed regulated electric motor
- No tools needed to change the clamping shell
- A portable and light machine for mobile and secure operations
- Modular design, ensuring compatibility within the RPG series
- The special adapter clamping shell enables the RPG 1.5 clamping shells to be used to increase the range of the machine
- A removable bench stand is included with the electric version
- Machine with rotating/removable drive

### Your benefits:

- Considerable cost-effectiveness thanks to low initial and production costs
- Portable, easy to handle and safety use
- Clean room compatible

### Improved features in the cordless versions thanks to lithium ion technology:

- Motor with high performance and small size
- No memory effect
- Single cell monitoring in the cordless pack
- Electronic overload protection with integrated temperature monitor
- Robust cordless packs with capacity display
- Minimal self-discharge
- Environmentally friendly
- AIR COOLED technology for short charging times and a long service life



RPG ONE



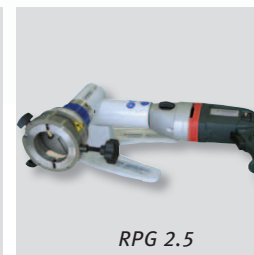
RPG ONE Cordless



RPG 1.5



RPG 1.5 Cordless



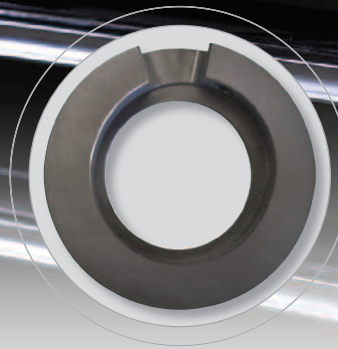
RPG 2.5



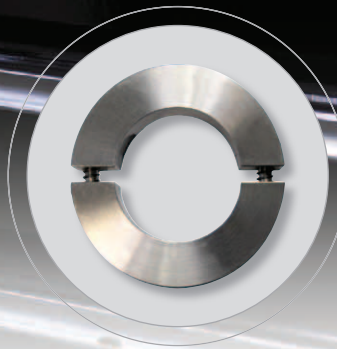
RPG 2.5 Cordless



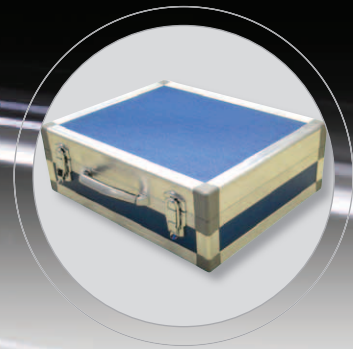
Includes tool holder WH and multifunction tool MFW, a two-sided tool bit with high-performance Balinit® Futura protective coating against tool wear. The MFW can be used for all machines of the RPG series.



Using this adapter clamping shell, the clamping shells for the RPG 1.5 can also be set up on RPG 2.5 machines, extending the processing range to min. 6.35 mm (0.250 inches). Supplied as standard with the RPG 2.5.



Stainless steel clamping shells in different dimensions. Extremely durable. Ensures precise mounting of tubes and quick change of clamping shells without tools.



Includes a durable storage and shipping case for safe transport. Very sturdy design.

## Tube Squaring Machines

Technical data	RPG ONE	RPG ONE Cordless	RPG 1.5	RPG 1.5 Cordless	RPG 2.5	RPG 2.5 Cordless
Dimensions (LxHxD) [mm]	390 x 200 x 70	261 x 255 x 80	400 x 350 x 160	275 x 255 x 90	500 x 300 x 170	260 x 300 x 320
Dimensions (LxHxD) [inch]	15.35 x 7.87 x 2.76	10.28 x 10.04 x 3.15	15.75 x 13.78 x 6.30	10.83 x 10.04 x 3.54	19.69 x 11.81 x 6.69	10.24 x 11.81 x 12.60
Weight (without accessories) [kg/lbs]	4.14 / 9.13	2.88 / 6.35	4.7 / 10.36	3.44 / 7.58	6.6 / 14.6	5.34 / 11.8
230 V, 50/60 Hz EU	Code 790 036 031	–	Code 790 037 001	–	Code 790 030 001	–
110 V, 50/60 Hz EU	Code 790 036 033	–	Code 790 037 003	–	Code 790 030 003	–
120 V, 50/60 Hz US	Code 790 036 032	–	Code 790 037 002	–	Code 790 030 002	–
230 V, 50/60 Hz EU, Cordless: 18 V	–	Code 790 036 021	–	Code 790 037 011	–	Code 790 030 011
115 V, 60 Hz US, Cordless: 18 V	–	Code 790 036 022	–	Code 790 037 012	–	Code 790 030 012
Speed of the tool [rpm]	145 - 380	0 - 400	145 - 380	0 - 400	1. speed: 9 - 52 2. speed: 27 - 153	1. speed: 0 - 24 2. speed: 0 - 83
Sound pressure level (EN 23741) [dB(A)]	approx. 78	approx. 78	approx. 78	approx. 78	approx. 78.2	approx. 78.2
Vibration level (EN 50144) [m/s <sup>2</sup> ]	< 2.5	< 2.5	< 2.5	< 2.5	< 2.5	< 2.5
<b>Application range</b>						
Tube OD min. - max. [mm]	3.00 - 25.40	3.00 - 25.40	3.00 - 38.10	3.00 - 38.10	6.35* - 63.50	6.35* - 63.50
Tube OD min. - max. [inch]	0.118 - 1.000	0.118 - 1.000	0.118 - 1.500	0.118 - 1.500	0.250* - 2.500	0.250* - 2.500
Wall thickness max. [mm]	3.00	3.00	3.00	3.00	3.00	3.00
Wall thickness max. [inch]	0.118	0.118	0.118	0.118	0.118	0.118
Tube materials	High-alloy steels (stainless steel material no. 1.40... to 1.45...) as per DIN 17 455 and DIN 17 456), unalloyed and low-alloy steels, aluminum.					

### Accessories

Dimensionally specific clamping shells**	<b>on request</b>
Standard tool holder WH12-I for squaring:	<b>Code 790 037 152</b>
Special tool holder WH12-I for squaring:	<b>Code 790 037 154</b>
Tool holder WH3-V-30 for beveling (30°):	<b>Code 790 037 158</b>
Tool holder WH3-V-35 for beveling (35°):	<b>Code 790 037 159</b>
Please enquire about further tool holders for diverse beveling angles.	
Multifunctional tool MFW-P-2	<b>Code 790 038 314</b>

\* Using a special adapter clamping shell (supplied as standard with the RPG 2.5), the clamping shells for the RPG 1.5 can also be used for the RPG 2.5 machines, extending the range of application to min. 6.35 mm (0.25").

\*\* Please check the outer diameter of the tubes before ordering the clamping shells. Non-standard sizes may require a special size (particularly for tubes in accordance with DIN 2430).

The technical data is non-binding. It does not include any assurance of properties. Subject to change. Our general terms and conditions apply.

### Included with the machine

- 1 Tube Squaring Machine RPG ONE, RPG 1.5 or RPG 2.5 (Cordless)
- 1 Transportation case
- 2 Rechargeable batteries, 1 Battery charger (for cordless versions only)
- 1 Tool holder (Code 790 037 152)
- 1 Multifunctional tool (Code 790 038 314)
- 1 Adapter clamping shell (Code 790 030 094, for RPG 2.5 only)
- 1 Tool set
- 1 Set of operating instructions and spare parts list

Stamp of distributor:

© Orbitalum Tools GmbH (02.2010)

Orbitalum Tools GmbH, Josef-Schuettler-Str. 17, 78224 Singen, Germany

#### Sales Contact:

Tel. +49 (0) 77 31 792-787 up to -790  
 Fax +49 (0) 77 31 792-524  
 tools@orbitalum.com  
 www.orbitalum.com

#### Repair Service:

Josef-Schuettler-Str. 17  
 78224 Singen, Germany  
 Tel. +49 (0) 77 31 792-764  
 Fax +49 (0) 77 31 792-524